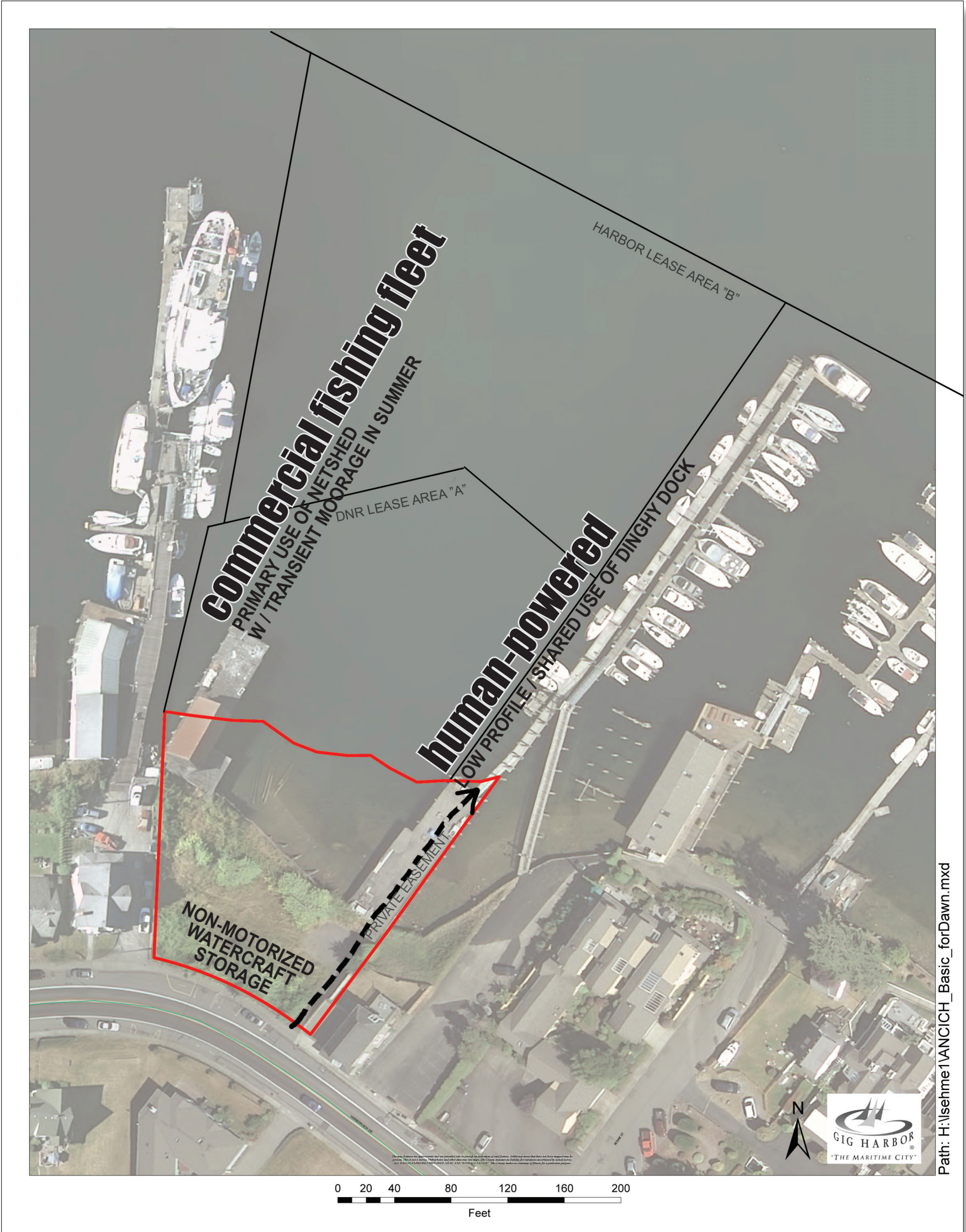


# Parks Commission FINDINGS



## List of Priorities for Ancich Park

Ancich Waterfront Park Parks Commission Use/Priority Worksheet of August 7, 2013		
Stakeholder identified UNDERMET NEEDS	Community-wide priority of UNDERMET NEEDS (1=high 2=moderate 3=low)	Comments
Active netshed for commercial fishing	1	Utilize opportunity for viewing of net work, educational use, supportive of historic working waterfront. Use for work and unload only, not storage.
Boaters access to land	2.5	Secondary to primary moorage, not an exclusive use. Consider proposing time limits for moorage similar to Eddon Boat.
Commercial fishing fleet moorage	1	Yes, very high priority for Ancich site due to working waterfront designation. Align with the netshed. Support the historic context and economy.
Dingy moorage	2	Similar to what is available at Jerisch.
Income producing use	3	For lease process, require leasors of space to rent at market rate cost to cover O&M of facilities.
Human powered craft storage/lockers	1	For general public use with potential to lease a portion of the structure to Kayak Team.
Low profile dock	1.5	City has two already at Eddon and Jerisch. However, this is also an approporate use for Ancich.
Preservation of Netshed	1	Historical preservation of Ancich netshed is a high priority, and has previously been forwarded to the City Council for initial phasing to preserve and restore it.
Public Dock	2	The Commission recognizes the need for additional seasonal (summer) moorage that could cooperate with the fishing fleet being out of town. There is no proposal for a primary use of a transit moorage dock, and such as use would not be appropriate for Ancich.
Recognition of historic working waterfront	1	Yes, very high priority for Ancich site.