

CITY UTILITY RATE ADJUSTMENTS



October 22, 2025

3:00 pm

Webinar Link: <https://us06web.zoom.us/j/84284778465>

Utility Website: <https://www.gigharborwa.gov/313/City-Utilities>

Jeff Langhelm, PE | Public Works Director

Jeff Olsen | Assistant Public Works Director

Chuck Roy | Wastewater Superintendent

Michael Abboud | NPDES Coordinator

Jerica Hardin | Utility Billing Technician

Cacilia Clemente | Utility Billing Technician

What utilities does the city operate?

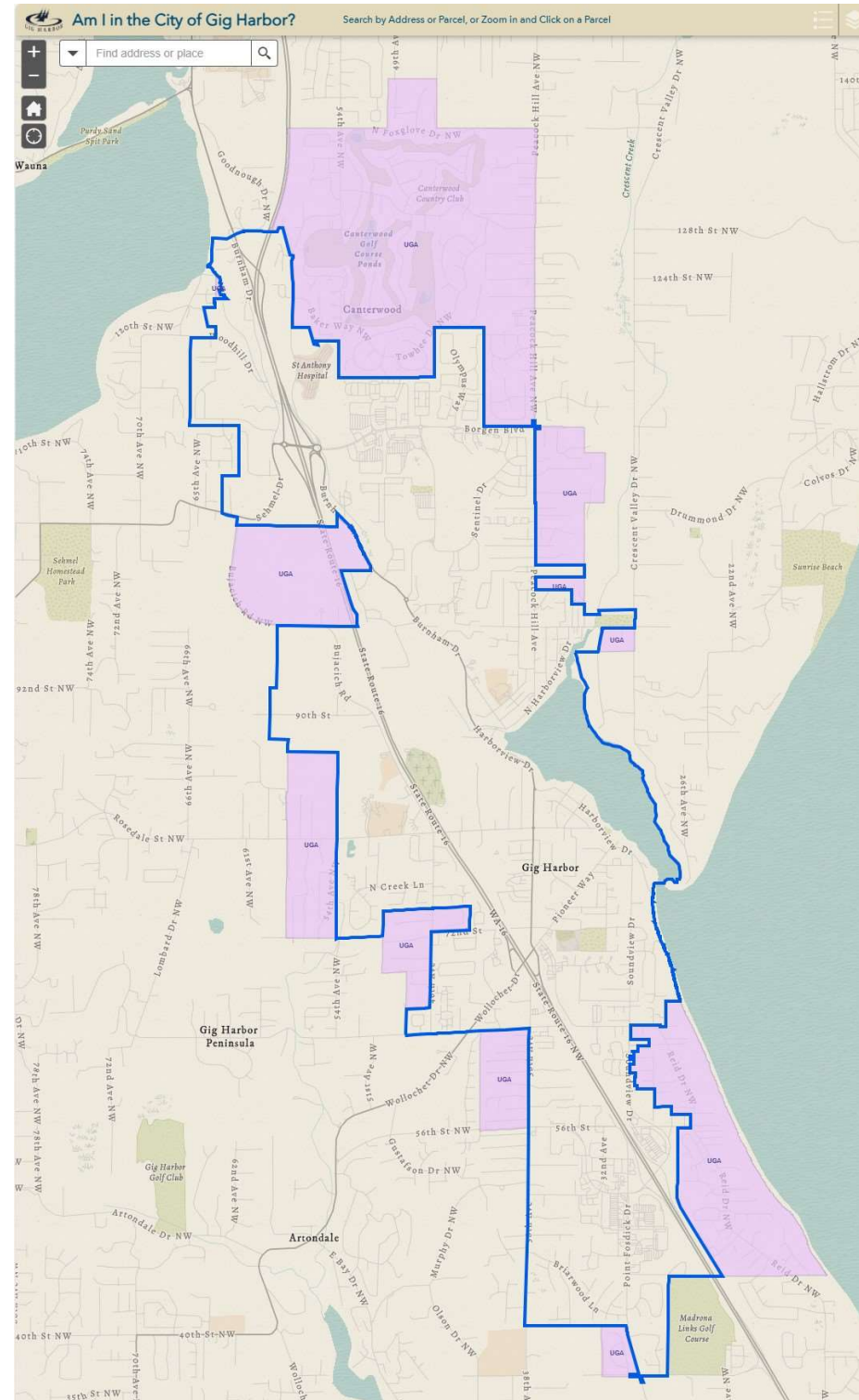
- Water: [GHMC 13.02](#)
- Sewer: [GHMC 13.28](#)
- Storm: [GHMC 14.00](#)



Do I have city utilities?

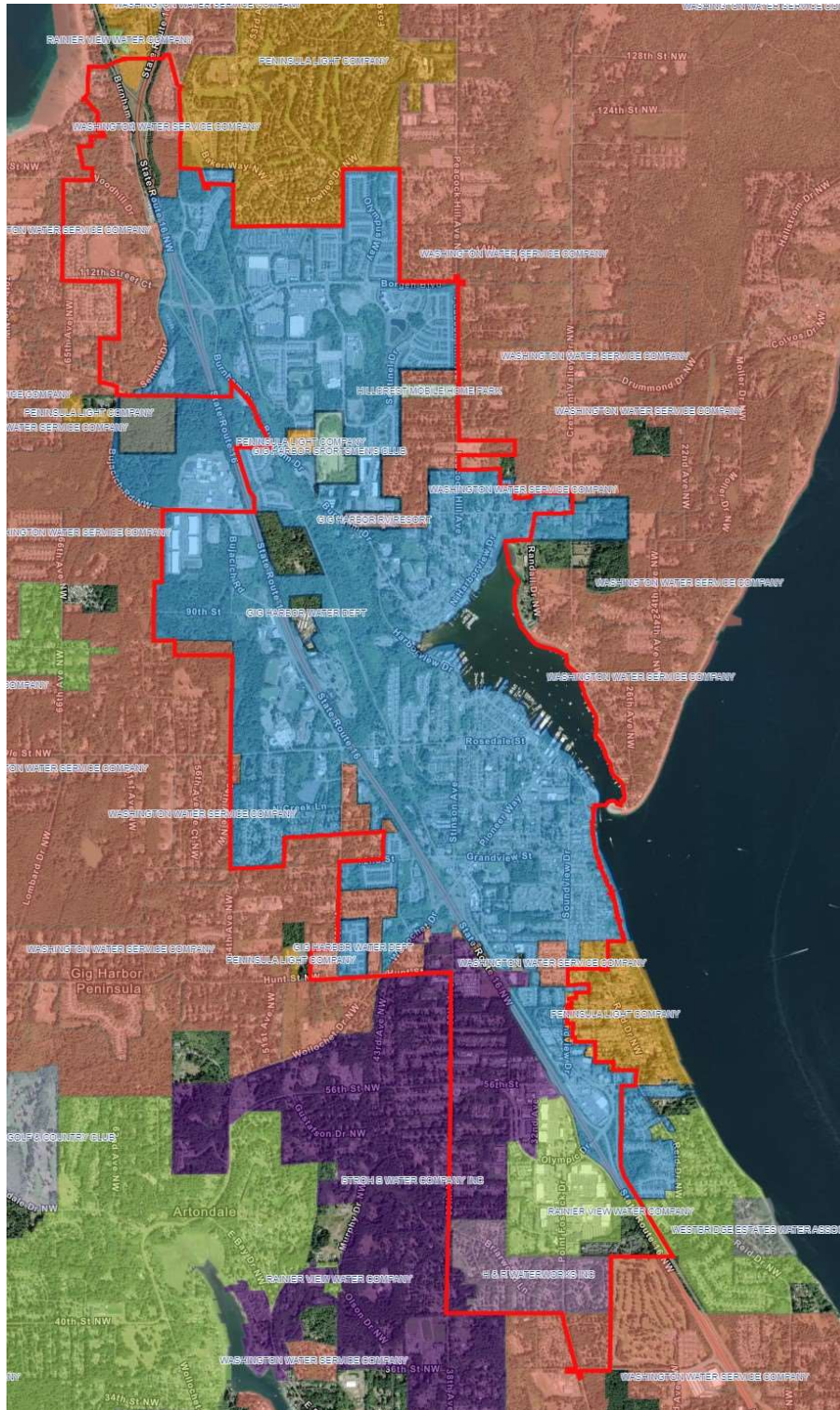
Check out your
utility providers here:

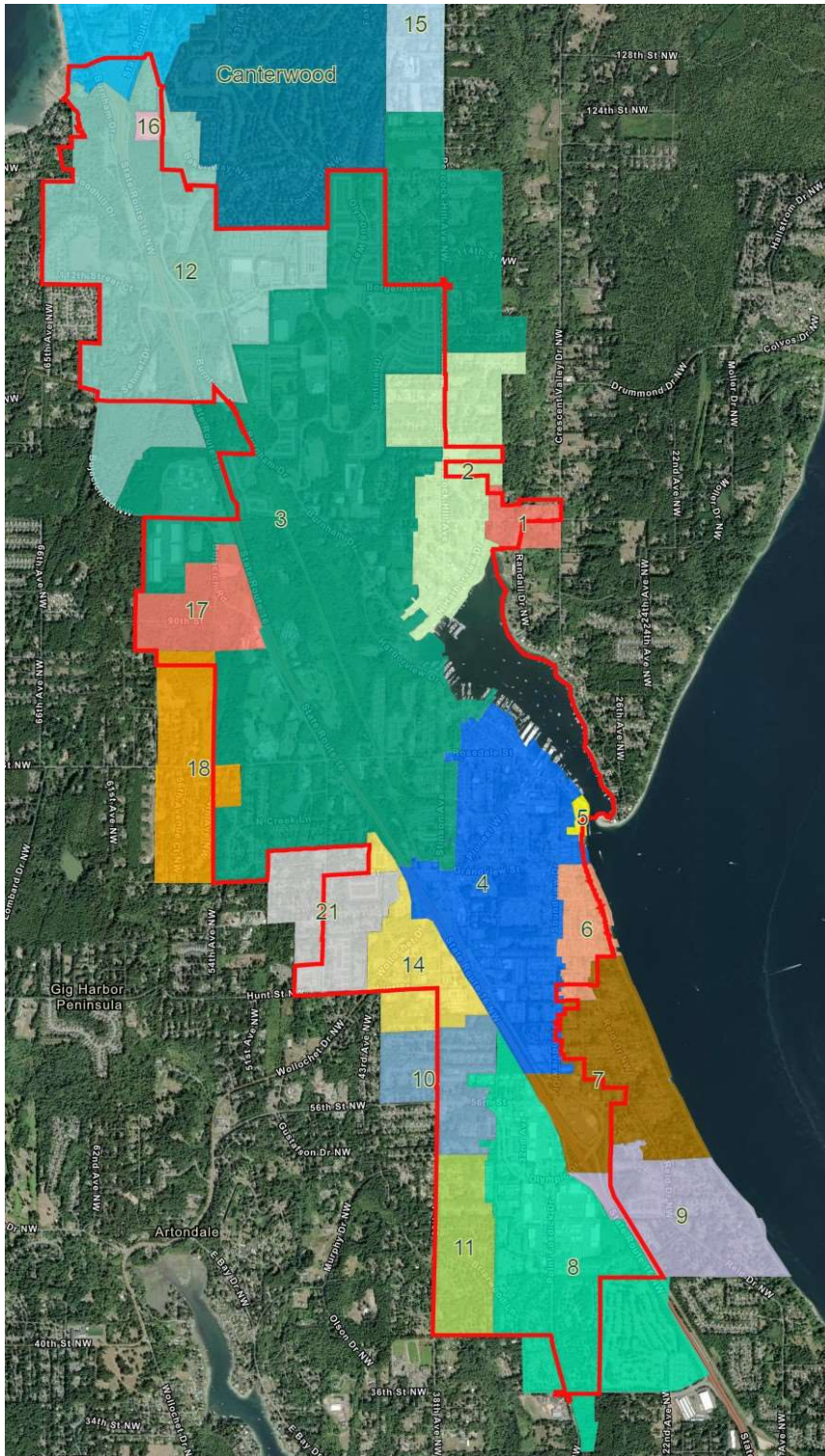
<https://www.gigharborwa.gov/316/Other-Local-Utility-Providers>



Water System

- 6 wells
- 6 reservoirs
- 58 miles of water mains
- 3,607 accounts



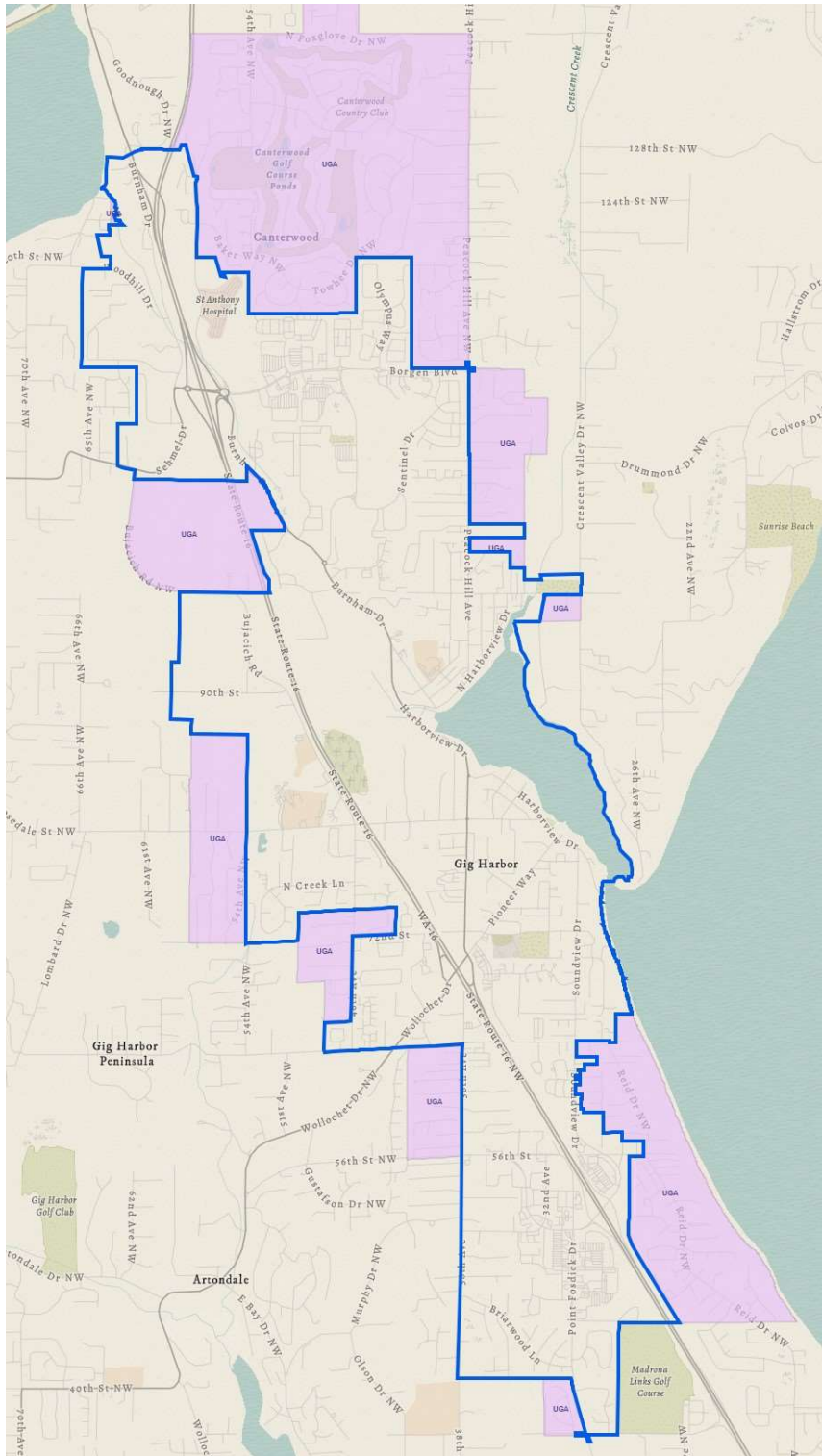


Sewer System

- 17 lift stations
- 2.4 MGD treatment plant
- 52 miles of sewer mains
- 3,932 accounts

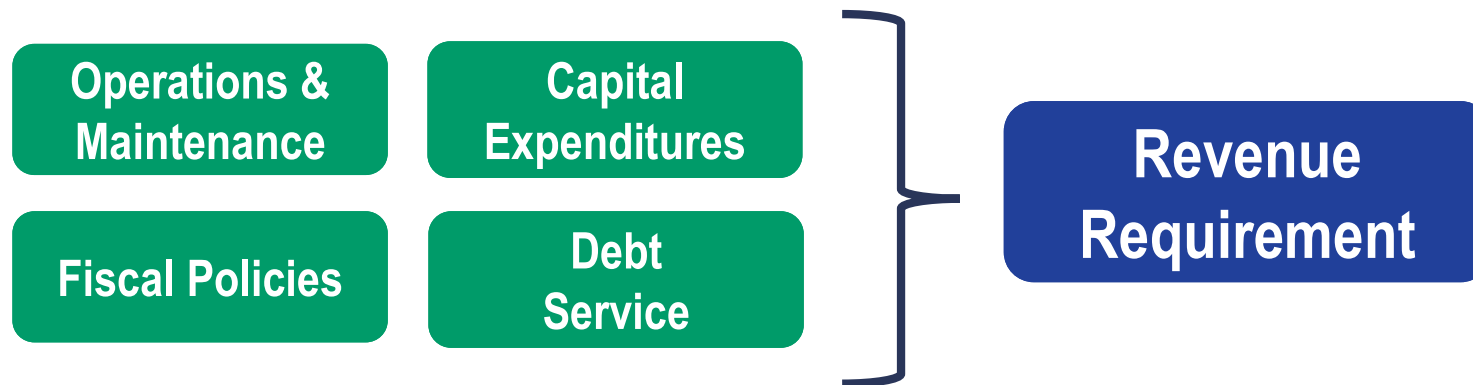
Storm System

- 3,548 Catchbasins/
Manholes
- 116 miles of roadway
- 68 miles of storm
pipes/culverts
- 4,659 accounts



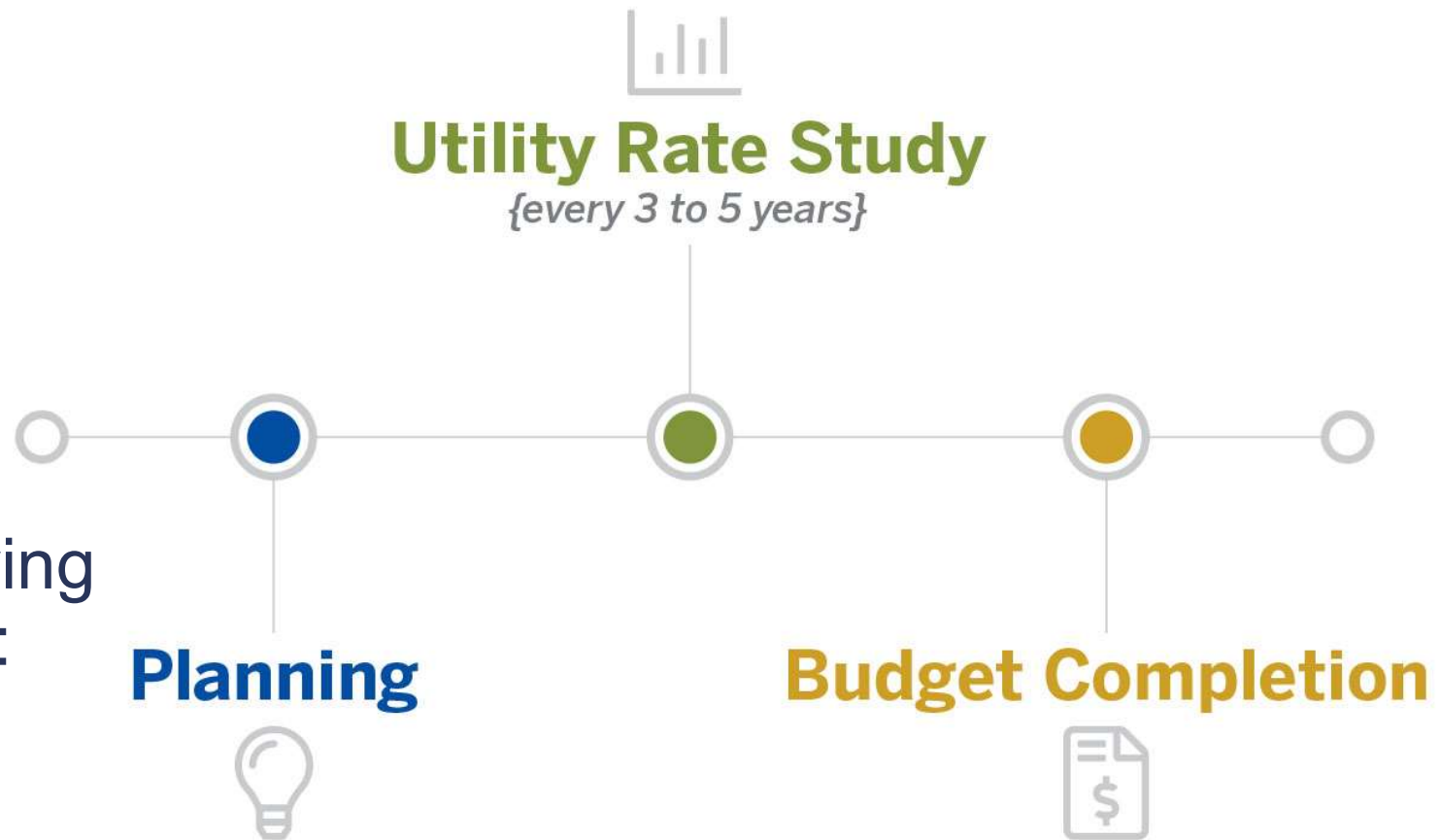
Why adjust utility rates?

Revenue Requirement: Total amount of rate revenue needed to meet each utility's financial obligations, including capital, operating, and policy-driven commitments.



Rate Study Process

- Utility rate study completed in October 2025
- City's consultant was FCS Group
- FCS Group and staff presented at the following council study sessions:
 - [July 17, 2025](#)
 - [August 14, 2025](#)
 - [October 16, 2025](#)





Water Utility Expenditure Highlights

6-year CIP:

- Water main replacements
- New emergency back-up well
- New water treatment system

On-going Maintenance:

- Water tank repainting
- Well maintenance
- Computer control system upgrades
- Hydrants and valves

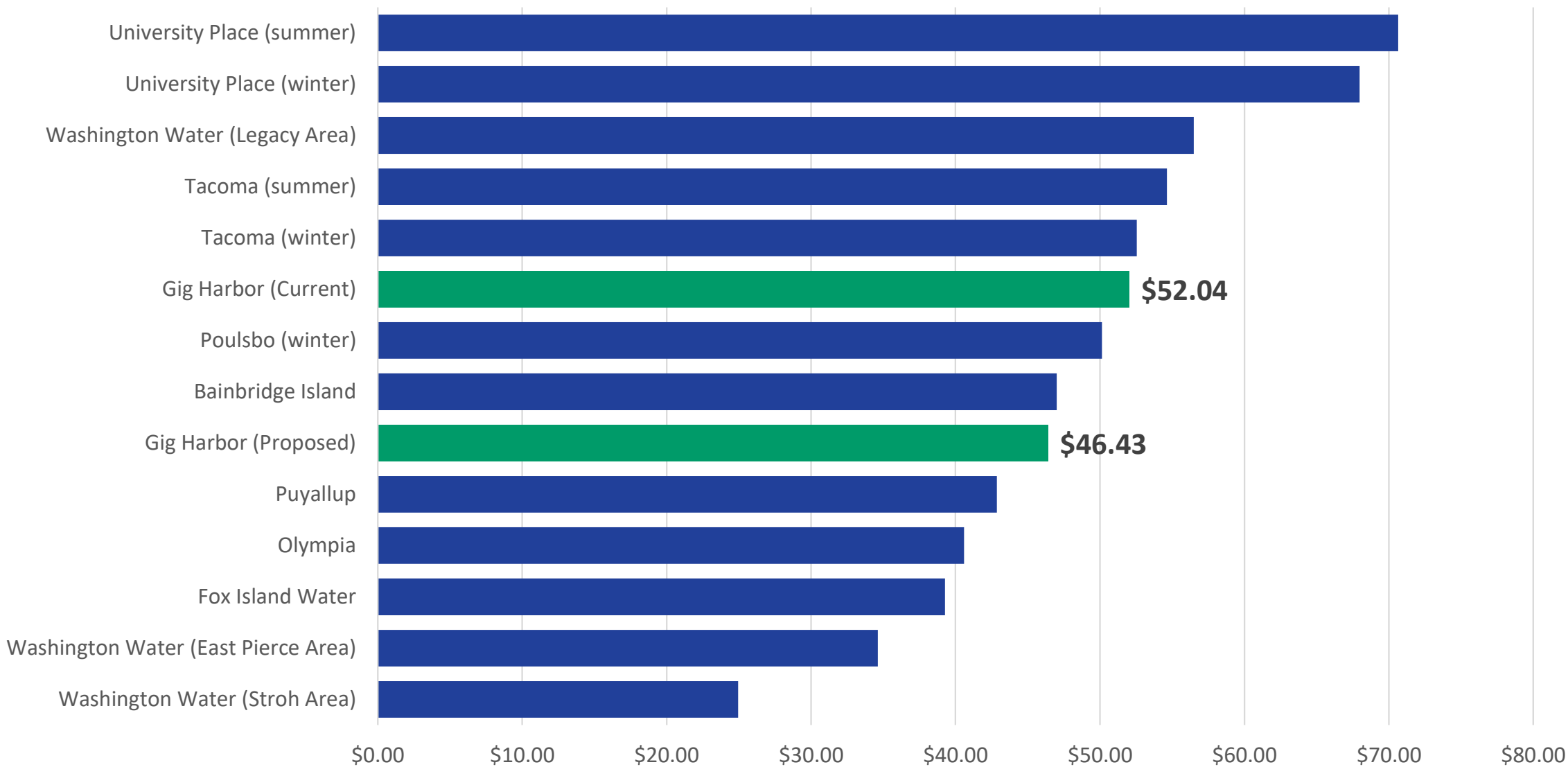
Year	% Increase	\$ per Month	Tier	Threshold	Basis	Inside Rates per CCF	Outside Rates per CCF
2026	10%	\$28.03	Tier 1	10 CCF	Average winter use	\$2.30	\$3.45
2027	10%	\$30.83	Tier 2	16 CCF	Mid-point between winter and summer	\$3.50	\$5.25
2028	10%	\$33.91	Tier 3	21 CCF	Average summer use	\$4.60	\$6.90
2029	10%	\$37.30	Tier 4	42 CCF	Twice the average summer use	\$5.80	\$8.70
2030	2%	\$38.05	Tier 5	>42 CCF	Everything else	\$6.90	\$10.35

Proposed SFR Base
 Water Rate Adjustments

Proposed 2026 Tiered Water
 Consumption Rates - NEW



Monthly Water Bill Survey (SFR, 8 CCF)





Sewer Utility Expenditures

6-year CIP:

- Lift station upgrades
- Treatment plant improvements

On-going Maintenance:

- Collection system inspecting and clearing
- Pump and motor assembly replacements
- Computer control system upgrades
- Treatment plant chemicals and wear items

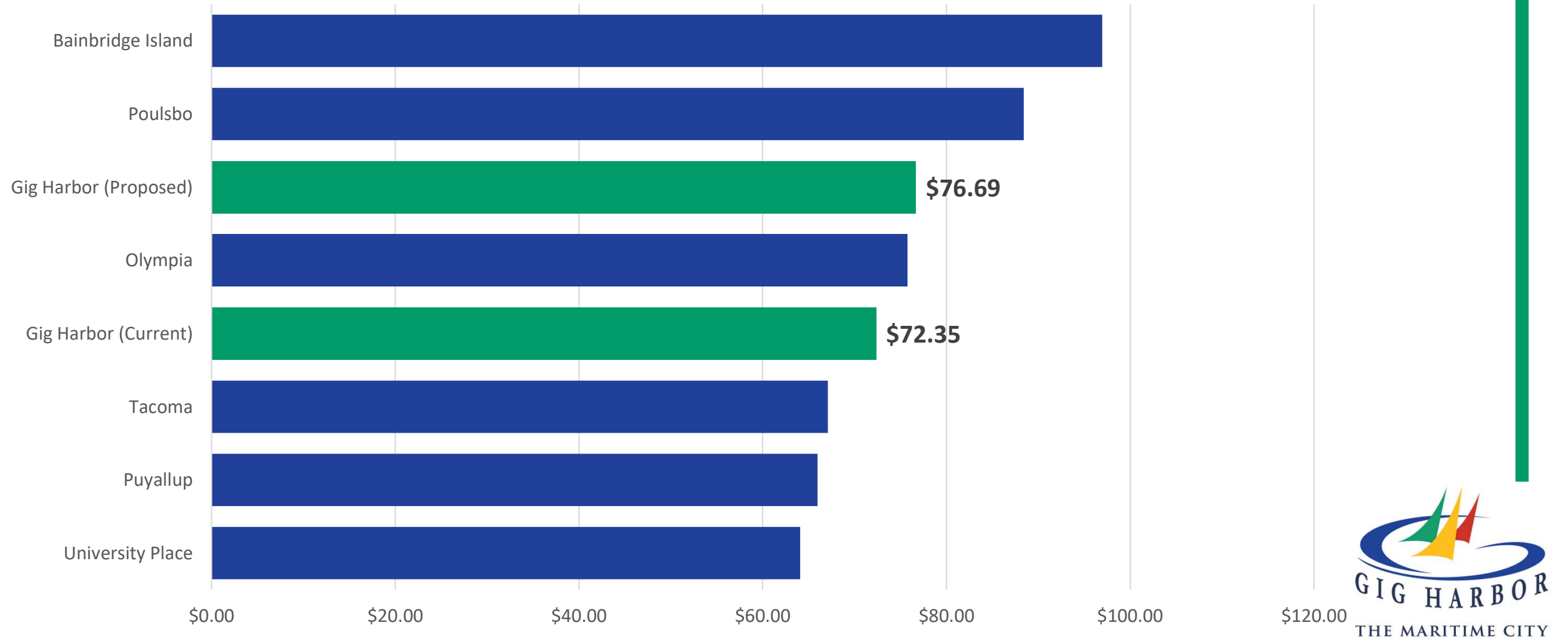


Year	% Increase	Base Rate \$ per Month	Commodity Rate \$ per Month per CCF
2026	6%	\$47.49	\$5.84
2027	6%	\$50.34	\$6.19
2028	6%	\$53.36	\$6.56
2029	6%	\$56.56	\$6.95
2030	1%	\$57.13	\$7.02

Proposed SFR Base Sewer Rate and Commodity Rates Adjustments



Monthly Sewer Bill Survey (SFR, 5 CCF)





Storm Utility Expenditures

6-year CIP:

- Water quality treatment
- Culvert replacements for fish passage

On-going Maintenance:

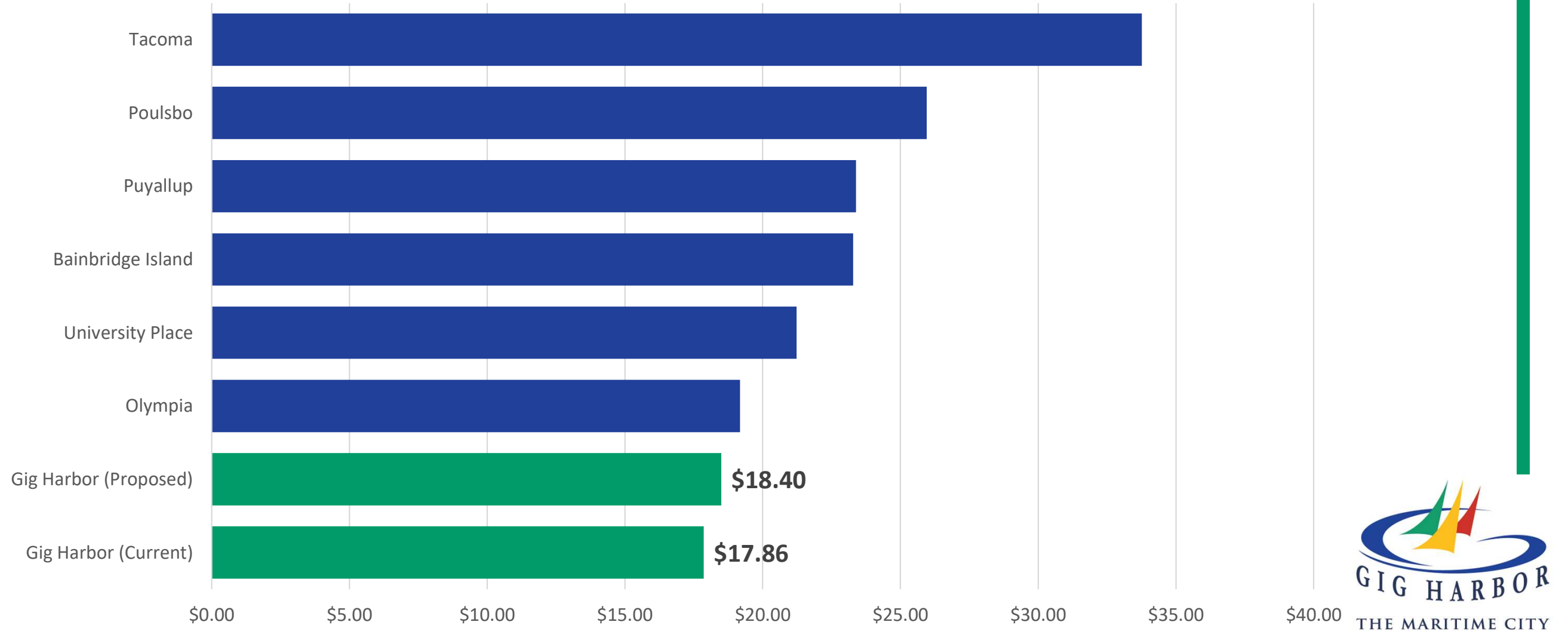
- Implementing federal storm permit requirements
- Storm pipe inspecting and clearing
- Outfall repairs

Year	% Increase	Base Rate \$ per Month
2026	3%	\$18.40
2027	3%	\$18.95
2028	3%	\$19.52
2029	3%	\$20.11
2030	3%	\$20.71

Proposed SFR Base Storm Rate Adjustments



Monthly Storm Bill Survey (SFR, 1 EBU)





Next Steps

- First reading of ordinance before council at their Oct 27 meeting
- Second reading of ordinance at council's Nov 10 meeting
- Proposed effective date is January 1, 2026.

Questions and Answers

Jeff Langhelm | (253) 851-6170 | JLanghelm@gigharborwa.gov

Jeff Olsen | (253) 851-8406 | JOlsen@gigharborwa.gov

Chuck Roy | (253) 851-8999 | CRoy@gigharborwa.gov

Michael Abboud | (253) 853-2646 | MAbboud@gigharborwa.gov

Jerica Hardin | (253) 853-8251 | JHardin@gigharborwa.gov

Cacilia Clemente | (253) 530-7080 | CClemente@gigharborwa.gov

City Utilities Website: <https://www.gigharborwa.gov/313/City-Utilities>

